

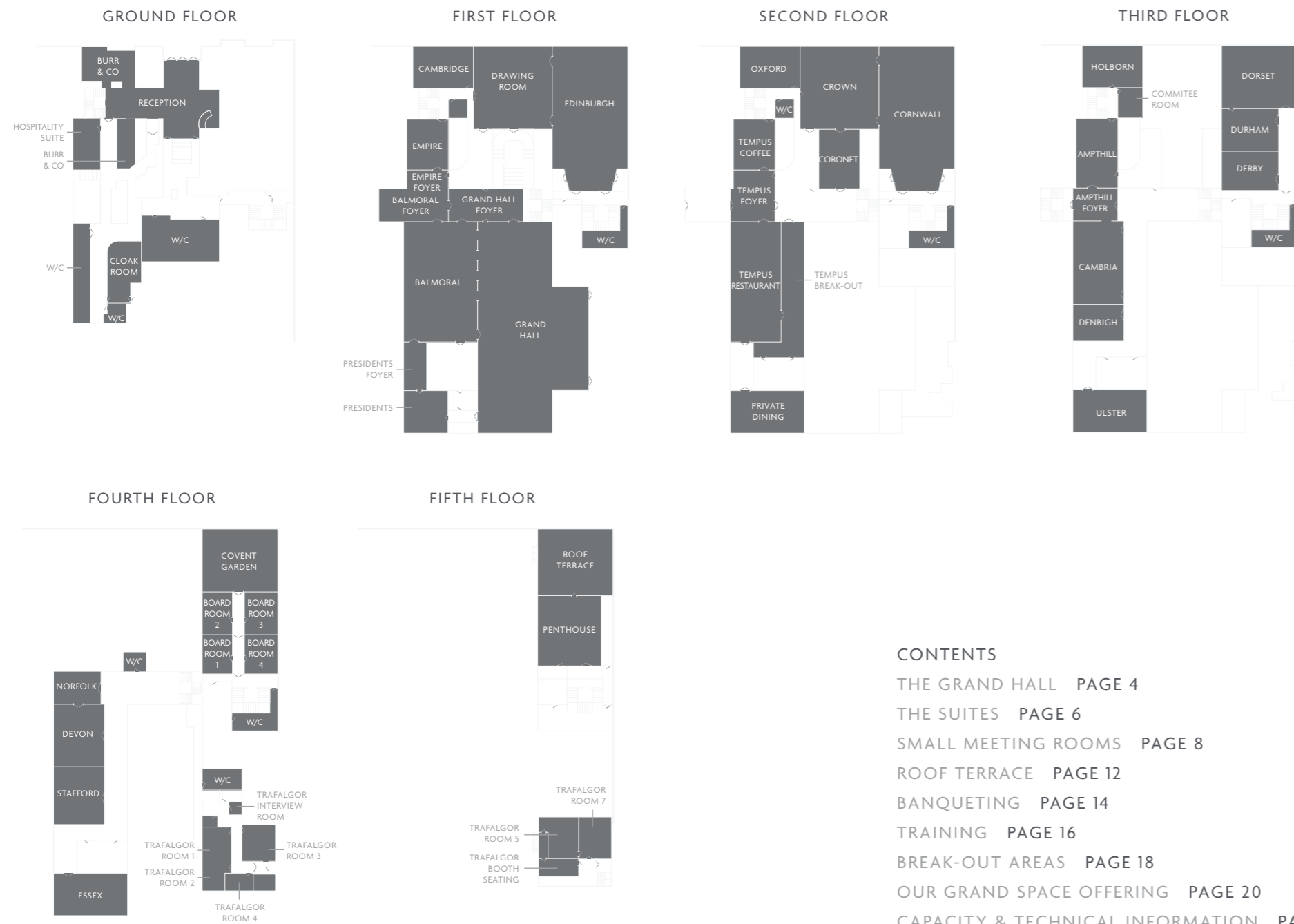


# DE VERE

GRAND CONNAUGHT ROOMS



CONFERENCE & BANQUETING



CONTENTS

THE GRAND HALL PAGE 4

THE SUITES PAGE 6

SMALL MEETING ROOMS PAGE 8

ROOF TERRACE PAGE 12

BANQUETING PAGE 14

TRAINING PAGE 16

BREAK-OUT AREAS PAGE 18

OUR GRAND SPACE OFFERING PAGE 20

CAPACITY & TECHNICAL INFORMATION PAGE 22



A warm welcome to  
De Vere Grand Connaught Rooms

WELCOME

De Vere Grand Connaught Rooms' iconic style will take your breath away. Its palatial interiors, crystal chandeliers and central London location are truly unforgettable.

High arched ceilings, exquisite lighting and beautiful wood panelling are all part of its unique character.

Business meetings here make a statement, training and team building exercises are more pleasure than work and even simple functions create lasting memories. Well known as the home of the FA and hosting showcase events for The British Racing Drivers Club and Wella Professionals, De Vere Grand Connaught Rooms is famous for its red carpet events.

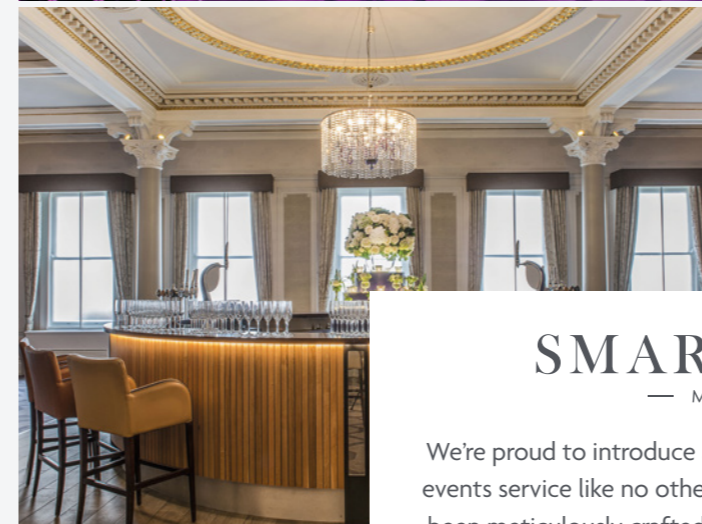
Whichever event you experience in these stunning surroundings, you'll soon realise that De Vere Grand Connaught Rooms is more than inspiring, it'll be the talking point of the entire experience.

Welcome.

*Laurie Nicol*

LAURIE NICOL

Co - Chief Executive Officer



## SMART SPACE

— MEETINGS —

We're proud to introduce Smart Space, our new meetings and events service like no other. Available at all De Vere venues, it's been meticulously crafted to create unforgettable events. So, whether you want a unique venue in the country or the city, you'll experience exceptional service every time.

## SHOWTIME

— REWARDS —

Showtime is our way of saying thank you for your conference, training and events business. Place an enquiry with us and receive a free Odeon cinema ticket (two if you're a corporate booker). Plus, if you hold your event with us you'll earn points to spend at top high street stores like John Lewis.

SIGN UP FOR FREE AT [SHOWTIME-REWARDS.CO.UK](https://www.showtime-rewards.co.uk)

DE VERE GRAND CONNAUGHT ROOMS

+44 (0) 207 405 7811

[gcrconference@devere.com](mailto:gcrconference@devere.com)

CONFERENCE & BANQUETING

# The Grand Hall

## The Grand Hall

THE STUNNING GRAND HALL IS OUR MAIN CONFERENCE AND EVENT AREA. MAJESTIC YET WELCOMING, THIS PRESTIGIOUS SPACE WITH ADJOINING ROOMS IS INCREDIBLY VERSATILE.

Formerly a key meeting place for the Freemasons, this fantastic hall was considered the largest room of its kind in London, and still is amongst the most generous. Full of character this inspiring grade II listed hall allows you to make the most of the adjoining Balmoral, President and neighbouring event rooms. Together they create an impressive, spacious area you can tailor to your event.

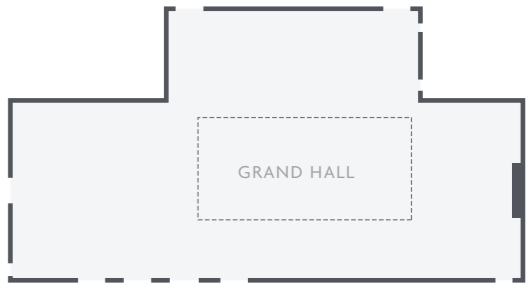
Built in 1813 and extended in 1905 the elegance and classic grandeur is evident in every curve of the Grand Hall. But the real beauty has to lie in its contemporary private bar and dedicated green room, perfect for key note speakers to prepare themselves for your event.

For dimensions and full capacity details, please see page 22.

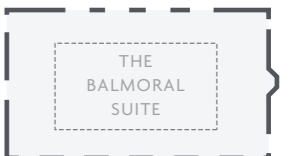
## The Balmoral Suite

FLOODED WITH NATURAL DAYLIGHT, THE BALMORAL SUITE PROVIDES A RELAXED AND POSITIVE ATMOSPHERE FOR A VARIETY OF EVENT TYPES.

Located with access to The Grand Hall Green Room, the space can either be used as overspill from the Grand Hall or for an event all of its own. With room partitions that can be easily set up and taken down, extra flexibility is made available in just a matter of minutes.



THE GRAND HALL  
First floor  
Adjacent to Balmoral Suite  
Ornate ceilings  
Grade II Listed  
Superfast Wi-Fi up to 1GB  
Up to 599m2  
Max. capacity: 750 Theatre



THE BALMORAL SUITE  
Natural daylight  
Ideal for drinks reception  
Access to Grand Hall Green Room  
Superfast Wi-Fi up to 1GB  
Max. capacity: 700 (when combined with The Grand Hall for dinner)

## The Edinburgh Suite and The Cornwall Suite

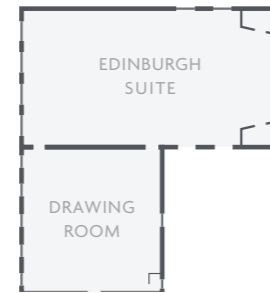
FOR ALL THE GRANDEUR OF A SPECTACULAR EVENT ON A MORE INTIMATE SCALE, WE HAVE THE EDINBURGH AND CORNWALL SUITES.

Stunning in every way, these two superior suites can create nothing but a lasting impression. Full of character and sophistication any event held here will have the attention of everyone attending.

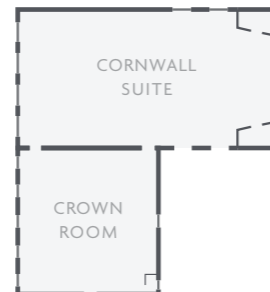
Positioned on the first and second floor of the Central Wing, these spaces will accommodate a variety of events. The charming Edinburgh Suite has easy access to the Drawing Room Bar where your guests can retire for a celebratory drinks reception and relax after a day of being focused for business.

The Cornwall Suite is a space unlike any other. Striking surroundings, beautiful ceilings and an array of intuitive technology creates a superb atmosphere. Combining business with pleasure is the adjoining Crown Room. A space perfect for holding impressive exhibitions, or relaxing over a drink while you chat through the day's inspiring events.

For dimensions and full capacity details, please see page 22.



THE EDINBURGH SUITE & THE DRAWING ROOM  
First floor  
Full of character  
307 m<sup>2</sup>  
Adjacent to Drawing Room Bar  
Superfast Wi-Fi up to 1GB  
Max. capacity: 450



THE CORNWALL SUITE & CROWN ROOM  
Second floor  
Unique domed ceiling  
307m<sup>2</sup>  
Adjoining Crown Room is perfect for drinks receptions  
Superfast Wi-Fi up to 1GB  
Max. capacity: 400



## The Suites

## Smart Space meeting rooms



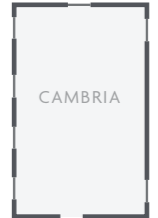
WELCOME TO OUR MEETING ROOMS. OVER 30 VERSATILE SPACES WITH CONTEMPORARY DÉCOR AND UP-TO-THE-MINUTE TECHNOLOGY.

De Vere Grand Connaught Rooms has an impressive choice of 37 conference, meeting and corporate training rooms. Many have generous spaces for breakout sessions or one-on-one meetings. Our Smart Space rooms are so versatile you can host any event from a small executive boardroom meeting to an inspiring seminar.

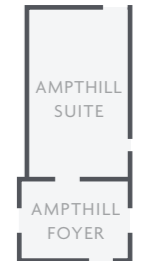
Your dedicated Event Manager can help you with everything from room planning to demonstrating the extensive technology available. You'll discover we're well equipped with every necessity from high-speed Wi-Fi to projectors and ergonomically designed chairs.

When colleagues need to stretch their legs we have free flowing tea and coffee to keep everyone refreshed and focused.

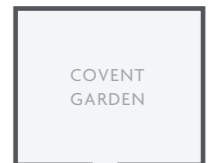
For dimensions and full capacity details, please see page 22.



**CAMBRIA**  
Natural daylight  
Full of character  
High ceiling  
Superfast Wi-Fi up to 1GB  
Max. capacity: 120



**AMPTHILL SUITE**  
Natural daylight  
Full of character  
High ceiling  
Superfast Wi-Fi up to 1GB  
Max. capacity: 100



**COVENT GARDEN**  
Natural daylight  
Contemporary feel  
Four breakout rooms adjacent  
Self-contained area  
Superfast Wi-Fi up to 1GB  
Max. capacity: 80

# Penthouse Suite & Roof Terrace



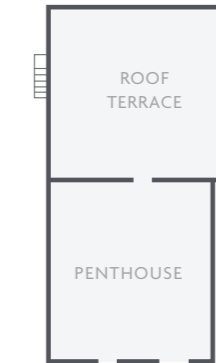
THE ROOF TERRACE

VIEWS OF THE CAPITAL'S SKYLINE ARE STUNNING FROM THE SPECTACULAR TERRACE AND PENTHOUSE.

This is just the place to retreat and relax. Positioned high over London on the fifth floor, our spacious terrace is a distinctive space that's always a talking point. It's the ideal place to host a sparkling drinks reception with comfortable seating, ambient music and warming heaters.

Inside you'll discover a light, airy Penthouse Suite, perfect for smaller functions. We can set up a bar and the cosy seating is ideal for networking.

For dimensions and full capacity details, please see page 22.



PENTHOUSE &  
ROOF TERRACE  
Outdoor space  
Natural daylight  
Soft seating break out space in room  
Private floor  
Superfast Wi-Fi up to 1GB  
Max. capacity: 80



THE PENTHOUSE SUITE

# Banqueting

DISCOVER THE HIGHEST STANDARDS FROM THE HEART OF OUR KITCHEN, WHERE OUR TEAM CREATE RESTAURANT QUALITY FOOD ON A BANQUET SCALE.

Dining with us is a remarkable experience.

Our Executive Chef brings a wealth of experience to create irresistible cuisine. From a healthy working lunch, through to exceptionally presented evening dishes, we use only the finest produce London has to offer.





COVENT GARDEN SUITE

## Training

THE GRAND CONNAUGHT ROOMS WILL BOTH INSPIRE  
AND MOTIVATE YOU AND YOUR TRAINEES.

While the Covent Garden Training Suite quietly hums with intuitive technology you'll find every facility to ensure your experience is perfect – like climate control, the very latest screens, along with easily accessible digital connection points and superfast Wi-Fi.

You will also find a series of comfortable breakout rooms specially designed to provide the ideal environment for smaller groups or one-on-one guidance.

To keep you energised you'll always find our coffee stations serving the finest fresh coffee, tea, chilled fruit juices, soft drinks and healthy snacks.

In our Restaurant, you'll find a selection of light dishes, wholesome lunches and delicious dinners for any palate.

We'd also like to offer you the opportunity to join our hugely popular Trainers' Club. Joining is free, with members enjoying a generous range of benefits designed to make organising and delivering effective training a great deal easier.



## Break-out areas

MAKE TAKING A BREAK SOMETHING  
TO LOOK FORWARD TO WITH OUR  
BREAKOUT, REFRESH AND REFUEL  
COFFEE SHOPS.

Whether it's time to relax, or get ideas  
flowing, our quality refreshments such as  
coffee, tea, juices and light bites are always  
on hand to help. Featuring elegant, high  
tables and art-deco lighting, plus Wi-Fi and  
power sockets, our Breakout, refresh and  
refuel coffee areas are ideal for a re-energising  
breakout session or informal meetings. Be sure  
to try the cakes and pastries, they're simply  
delicious.





## Our Grand Space offering

BOOKING A LARGE EVENT WITH US IS A BIG DEAL, SO WE MAKE SURE YOU GET THE MOST OUT OF IT.

We understand that organising an event can be complicated, so we offer a preferential package for Grand Space bookers, to make sure everyone's day goes as smoothly as possible. This personal service includes a pre-conference meeting and tasting menu, access to your event space the night before, your very own dedicated expert Event Manager, and VIP goody bags for organisers.

Visit [devere.com](https://www.devere.com) to view our full Grand Space Offering.

Capacities

ROOM NAME	DIMENSIONS L X W X H (M)	M²	TS/FP	CR/FP	CAB FP (8PT)	U	BR	BQT	STAND BUFF	EXH (M)
Grand Hall	37.09 x 12.85 x 12.38	476.60	750	315	400	120	120	540	1000	48 - 3x2m
Balmoral	18.76 x 11.76 x 4.62	220.06	200	100	120	50	50	150	500	15 - 3x2m
Presidents	7.12 x 5.8	41.30	30	x	24	12	15	20	x	x
Empire	8.85 x 7.46	66.02	40	20	32	20	20	40	40	x
Edinburgh	24.22 x 12.87 x 4/5.0	311.11	300	150	200	65	60	250	400	18 - 3x2
Drawing Room	13.10 x 13.60 x 2.61	178.16	x	x	x	x	x	x	200	4 - 3x2
Cambridge	10.53 x 5.25	55.28	50	x	24	20	24	30	50	x
Cornwall	24.26 x 12.95 x 6/4.1	314.17	300	150	200	65	60	250	400	18 - 3x2
Crown	13.10 x 13.64 x 2.61	178.89	120	80	80	40	40 (Hol Squ)	140	220	12 (10 stands with lunch for 120) - 3x2
Coronet	10.46 x 6.86 x 2.50	71.75	50	20	32	20	20	30	x	x
Oxford	10.37 x 5.44	56.41	50	x	24	20	24	30	50	x
Holborn	4.8 x 10.48	50.30	50	20	32	24	20	30	x	x
Committee	4.95 x 4.38	21.68	x	x	x	x	6	x	x	x
Amphill	12.36 x 7.36 x 2.64	90.97	100	50	48	32	32	60	100	6 - 3x2
Cambria	14.21 x 8.84 x 3.65	125.62	120	65	80	34	34	100	120	8 - 3x2
Denbigh	6.87 x 8.97 x 3.65	61.623	50	20	32	24	24	40	50	x
Ulster	11.91 x 6.85 x 3.65	81.58	80	40	48	30	30	60	60	x
Durham	9.25 x 7.1	65.68	50	30	40	20	24	40	50	x
Derby	9.5 x 6.84	64.98	50	30	40	20	24	40	50	x
Dorset	10.71 x 12.56	134.52	80	60	64	32	32	80	80	x
Covent Garden	12.30 x 9.60	118.08	80	32	64	30	30	x	x	x
Boardroom 1 - 4	7.80 x 5.26	32.51	x	x	x	x	12	x	x	x
Norfolk	5.29 x 6.74	35.65	20	6	16	x	12	x	x	x
Devon	10.60 x 8.83 x 3.55	93.59	100	40	48	28	28	60	100	x
Stafford	10.60 x 8.83 x 3.55	93.56	100	40	48	28	28	60	100	x
Essex	12.09 x 6.90 x 3.55	83.42	80	45	48	30	30	60	70	x
Penthouse	12.53 x 4.80	60.14	40	24	32	24	24	40	80	x
Trafalgar 1	11.70 x 4.90 x 2.50	57.33	25	20	24	20	20	x	x	x
Trafalgar 2	x	x	x	x	x	x	x	x	x	x
Trafalgar 3	6.0 x 6.30 x 2.50	37.8	25	12	18	14	16	x	x	x
Trafalgar 4	3.10 x 5 x 2.5	x	9	x	6	x	6	x	x	x
Trafalgar 5	6.60 x 6.80 x 2.40	44.88	20	16	16	14	11	x	x	x
Trafalgar 6	x	x	x	x	x	x	x	x	x	x
Trafalgar 7	5.70 x 6.80 x 2.40	38.76	20	12	18	14	13	x	x	x
Trafalgar 8	x	x	x	x	x	x	x	x	x	x
Trafalgar Office	x	x	x	x	x	x	3	x	x	x

Connectivity

- Free, full coverage, lightning-fast Wi-Fi throughout
- Some of the UK's best connectivity in hospitality with a maximum bandwidth of up to 1Gb
- Next generation Wi-Fi 6 and backup bandwidth to keep even the most data-hungry users online
- Up to 100 metres in the grounds

Finding us

We are right in the heart of Covent Garden just minutes from Holborn tube station and Covent Garden tube station on the Picadilly Line, offering direct access to Heathrow.

We're also just a five minute taxi ride from London Euston, Kings Cross and St Pancras International train stations. We are just over the bridge from Waterloo Station, a 15 minute walk away.

Travelling by car, we are in easy reach of the M25, and by air, Gatwick, Heathrow and London City airports are easily accessible.



DE VERE GRAND CONNAUGHT ROOMS

61–65 Great Queen Street,  
London WC2B 5DA  
+44 (0) 207 405 7811  
gcr@devere.com

www.devere.co.uk/grand-connaught-rooms

LOOKING FURTHER AFIELD?

De Vere operates over 260 meeting rooms and over 1,800 bedrooms, well located around London, the South East and The Cotswolds.

Find out more at [DEVERE.COM](http://DEVERE.COM)



## De Vere Reserve & Estates

Our mansion houses number some of Britain's most notable country estates. Whether hosting an exclusive event, or a luxurious weekend away; these storied country houses combine original features with modern comforts: the best of old and new.



## De Vere Estates

Complementing De Vere Reserve, our Estate event spaces and bedrooms are equally suited to business travellers, large groups, and leisure guests looking for comfort and convenience at a great price.



FOR US, SUSTAINABILITY IS A BIG RESPONSIBILITY. That's why we're making changes today to reduce our environmental footprint tomorrow.



De Vere Grand Connaught Rooms  
Central London, Covent Garden

De Vere Beaumont Estate  
West M25, Windsor

De Vere Horsley Estate  
South West M25, East Horsley

De Vere Latimer Estate  
North West M25, Chesham

De Vere Cotswold Water Park  
near M4 and M5, Cotswolds

De Vere Tortworth Court  
M5 Corridor, Bristol

De Vere Wokefield Estate  
M4 Corridor, Reading

De Vere Cranage Estate  
M6 Corridor, South Manchester

KEY

DE VERE RESERVE & ESTATES

DE VERE ESTATES



Find out more at [DEVERE.COM](https://www.devere.com)





DEVERE.COM