



# LEAF SPA



DE VERE

TORTWORTH COURT

# Leaf Spa

## at a glance

Set in the peaceful De Vere Tortworth Court, Leaf Spa is a retreat to escape for a spot of luxury and relaxation. Leaf Spa hosts a fully equipped gym, steam room, swimming pool, sauna, Jacuzzi and 5 treatment rooms.

Appointments are available for a range of specialist Spa treatments including facials, body massages and our Signature range of beauty treatments along with manicures and pedicures.

We have specialised therapists who can offer suitable treatments for those who have been affected or recovering from cancer.

The gym offers a range of cardiovascular and resistance training equipment suited to all levels of fitness.



## Half Spa Days

### Serenity Half Day Spa Retreat - £104PP

9am - 1pm or 2pm - 6pm, Monday – Friday

Complimentary use of towels, robe and slippers

Use of the pool for 3 hours

Afternoon tea

1 x Temple Spa 60 minute treatment

Treatment choices: Restore, Renew, Refresh or Recharge Ritual

15% off any Temple Spa retail products

20% off additional treatments

### Sparkling Half Day Spa Retreat - £160PP

9am - 1pm or 2pm - 6pm, Monday – Friday

Complimentary use of towels, robe and slippers

Use of the pool for 3 hours

Afternoon tea with a glass of fizz

1 x 50 minute Full Body Massage

and a 30 minute My Kinda Skin Facial

15% off any Temple Spa retail products

20% off additional treatments

A goodie bag



# Massage Collection

## Full Body Massage 50 minutes £85

A tailored massage designed to ease tension and stress, highly trained therapists will adapt their pressure to suit your needs. It will leave the entire body feeling completely pampered.

## Relaxing Back Massage 25 minutes £55

This back, neck and shoulder massage will help to work out those tight knots but also help to ease any stresses or tension. You will leave feeling untangled and refreshed.

## Tranquillity Scalp Massage 25 minutes £55

This unique massage focuses on the neck, scalp and face. Using specific pressure points over the area will help to relieve any accumulated tension. Oil is an option to give the hair some nourishment

## Hot Stone Back Massage 30 minutes £63

A warming yet soothing massage focusing on the back, neck and shoulders using volcanic hot stones to help you relax and destress.

## Hot Stone Full Body Massage 60 minutes £93

This treatment relies on the therapist's intuitive touch in harmony with heat releasing volcanic stones to work in a deeper level. The most blissful way to soothe the body and mind.

## My Kinda Mood 120 minutes £155

A prescriptive facial & massage - bespoke to you

Two hours of pampering, a wonderfully relaxing and restorative Full Body Massage is followed by an indulgent prescriptive facial.

You will be left looking, feeling and smelling oh so good!

## Tropical Bliss Lomi Lomi 50 minutes £85

Lomi Lomi which means 'loving touch' is a form of massage based on the ancient healing traditions of Hawaii. The rhythmic, fluid motions feel like gentle ocean waves, which provides a sense of connection and freedom. This massage works to release energy blockages within the body and assist in balancing physical, mental and emotional wellbeing.

## Cancer Wellbeing Massage 50 minutes £85

This treatment is for those who are currently living with cancer or beyond. The gentle touch of the therapist's hands brings harmony and promotes wellbeing. This full body massage is performed by specially trained therapists who will enable you to feel stress free and deeply relaxed.

*\*please inform the reception team on booking so your treatment is with the correct therapist.*

## New Beginnings 75 minutes £105

### Mummy To Be Massage

This treatment you will enjoy a full body massage without the need to lie on your tummy. Our specialised trained therapists know exactly how to work those sore, tired and aching muscles while you feel completely comfortable and relaxed. To top it off a face and scalp massage leaving your skin feeling baby soft!

*(For Mothers To Be over 12 weeks – please state at time of booking)*

## Work It Out Back Massage 30 minutes £63

### Detoxing / Muscle Workout Massage

A deep tissue back massage. We begin with a body brushing to stimulate the circulation and then concentrate on working on the back to ease tired and aching muscles. You will feel less tensed and relaxed.

## Work It Out Massage 60 minutes £93

### Muscle Workout and Detoxifying Massage

A deep tissue massage that relieves fluid retention and works out tired and aching muscles. Using the ingenious WORK IT OUT massage oil, including essential oils of Juniper, Lavender and Cypress. We begin with full body brushing to stimulate the circulation to improve lymph drainage. Then we perform a deep tissue massage with muscle-fitness techniques and movements to give your muscles a work out.

*90 minutes includes a scalp massage*



# Facial Collection

**Temple Spa** is a British brand with a Mediterranean soul. Our luxurious results driven skincare and spa experience are a tool in the hand to 'spa whenever you are' and most importantly to live, breathe and love who you are. We have an extensive menu of face and body treatments which will leave you feeling rested, revived and restored!

*Your body is a living temple, honour it, enjoy life and live it to the full!*

## My Kinda Skin 30 minutes £63

### Express Facial

Looking for results, like now? This revitalising facial includes a deep power cleanse, nutritious scrub and face mask, lymph drainage techniques for rapid turnaround topped off with a wake-up scalp massage.

## My Kinda Skin 60 minutes £90

### Bespoke Prescription Facial

A totally bespoke facial designed to suit your personal skin type and your concern. Let us analyse your skin and prepare a tailored treatment just for you, which will deliver amazing results. Your skin will be deeply cleansed and exfoliated followed by our signature face & décolleté massage. Whilst an application of a treatment mask is applied a relaxing scalp massage is performed. You will feel amazing and your skin will look so, so good.

## Go Guy 60 minutes £90

### The Male Executive Treatment

A facial to revive, refresh and invigorate your skin. A deep cleansing brush to start followed by a deep exfoliation and application of a bespoke face mask.

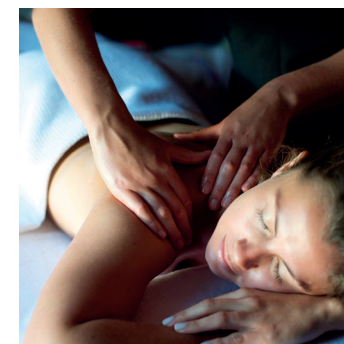
For the finale, a hot stone massage to the neck and shoulders to melt away any traces of tension or stress! Skin is left smoother, softer and hydrated.

## Champagne and Truffles Deluxe Facial 60 minutes £100 | 90 minutes £120

### The Crème De La Crème of Radiance Facials

This super luxe facial includes an anti-ageing lifting and sculpting face massage, resurfacing peel, warm stone shoulder and neck massage and topped with a hydrating and brightening alginate mask. The visible results ironed-out deep lines and wrinkles, firmer feeling and toned skin, reduced puffiness and youthful radiance with a supreme healthy skin glow.

*90 minutes includes a scalp massage*



# Signature Collection

## Restore Ritual 60 minutes £90

A back massage will help relieve stress and tension in the muscles and is followed by a Power Breakfast to give your skin the perfect glow!

## Refresh Ritual 60 minutes £90

A revitalising but energising foot and leg skin brush, followed by a back massage to help with tired and aching muscles.

## Renew Ritual 60 minutes £90

A refreshing Outer Glow exfoliation of the body, with a gentle buff away of dead skin cells on the face using the Breakfast Smoothie. This is then followed by a scalp massage. *Top to Toe of pampering!*

## Recharge Ritual 60 minutes £90

This invigorating treatment on the back includes cleansing, exfoliating scrub and a deep cleanse with a warm purifying mud followed by a stimulating back massage and finishes with a scalp massage.



## Body Treatments

### Dry Floatation

25 minutes £35

Delight in the sensations of complete weightlessness, this natural state of complete relaxation significantly enhances physical and mental health and well-being. 25 minutes of rest on the float will be equivalent to 3-4 hours of sleep at home

### Outer Glow

45 minutes £65

#### Face & Body Exfoliation

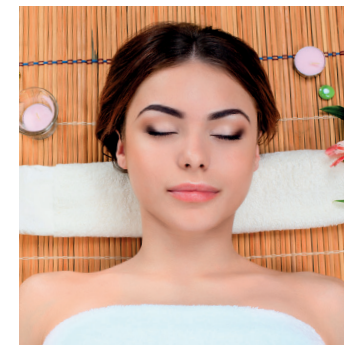
A top to toe buffing and polishing treat! Using the unique Sugar Buff we exfoliate and polish your body but also gently buff away dead skin cells on the face using the Breakfast Smoothie. This invigorating and refreshing all-over exfoliation treatment that leaves skin soft, revitalised and hydrated.

### Aaahhh

30 minutes £63

#### Leg & Foot Energiser

This oh-so-good treatment is instant relief for tired, overworked legs & feet. Begins with skin brushing, to help eliminate excess fluids, followed by leg and foot massage. The treatment is completed with invigorating rub of our cooling and soothing balm Aaahhh!



## Beauty Treatments

### Eyebrow Tint

£15

### Eyelash Tint

£25

### Eyebrow and Lash Tint

£30

*\*please note a patch test is required 48 hours prior*

### Eyebrow Wax

£15

### Lip or Chin Wax

£15

*\*Other waxing is available on request*





## Mii Cosmetics

File And Polish Hands Or Feet	25 minutes £30
File And Polish Gel Hands Or Feet	25 minutes £35
Manicure	45 minutes £40
Pedicure	45 minutes £40
Gel Manicure	45 minutes £45
Gel Pedicure	45 minutes £45
Gel Removal	£20

*\*Please inform the Spa if you have existing gel polish on prior to having your nail treatment which will require removal. Please note if not informed this could affect your chosen treatment.*

## Spa Etiquette

### Cancellations

You must give us at least 24 hours notice of cancellations. Failure to do so will result in the full treatment fee being charged to your card.

### Children

Children are not permitted in the spa treatment area or gymnasium, however, they may use the pool at restricted times. We do not offer treatments for anyone under 18 years old.

### Gift Cards

Gift cards are available and can be purchased online. Gift cards have a 12 month expiry from the date of purchase and are non-transferable and non-refundable.

### Mobile Phones

Leaf Spa is a tranquil environment where our guests can escape the pressures of modern living. We therefore, ask that you switch off mobile phones and other electronic devices before entering the treatment areas.

### Health Conditions & Pregnancy

Certain medical conditions may prevent you from some of the treatments available, please advise us of any health conditions, allergies or injuries at the time of booking.

### Home Care Products

To extend your experience with Leaf Spa your therapist can advise you on which products will help you look and feel your best until your next visit.

### Arrival Time

For treatments please arrive 15 minutes prior to your first scheduled appointment. We recommend that no jewellery should be worn to the spa, leave all personal items in changing room locker.

### Attire

A robe and slippers are provided if you have treatments. Please bring swimwear if you intend to use the pool and poolside areas or gym gear if you wish to use the Technogym equipment.

### Relaxation Room

Treatment only guests are welcome to use the Relaxation Room after their treatments.

### Service Charge

A discretionary service charge of 12.5% will be added to your treatment, which will go directly to the Spa therapist  
*(not included if part of a hotel package or Spa Day)*

### Booking

We advise that you book your spa treatments as far in advance as possible to secure your preferred date and time.

Guests staying overnight need to pre book the pool which includes 1 hour use of the facilities

Payment will be taken in full for any spa day packages at time of booking and if you book online. Otherwise payment will be taken on the day of your treatment.

To make a booking, contact the spa by either calling 01454 263 624 or email [tortworth.leisure@devere.com](mailto:tortworth.leisure@devere.com).

You can also make an online booking via our website.



# Find out more

Leaf Spa De Vere Tortworth Court

Overnight Spa packages are available

Please call 01454 263 000 to discuss your requirements  
and to tailor make a package for you.

## Opening hours

Monday - Sunday 8am - 8pm

## Also Visit

Spa 6 at our sister property De Vere Cotswold Water Park Hotel | [devere.com/spa6](https://devere.com/spa6)



*Follow our leaf spa instagram to keep up with or latest offers and spa days.*



De Vere Tortworth Court Hotel, Wotton-Under-Edge, Gloucestershire GL12 8HH

+44 (0) 1454 263624 | [Tortworth.L leisure@devere.com](mailto:Tortworth.L leisure@devere.com) | [devere.com/leafspa](https://devere.com/leafspa)

 @DeVereTortworthCourt